


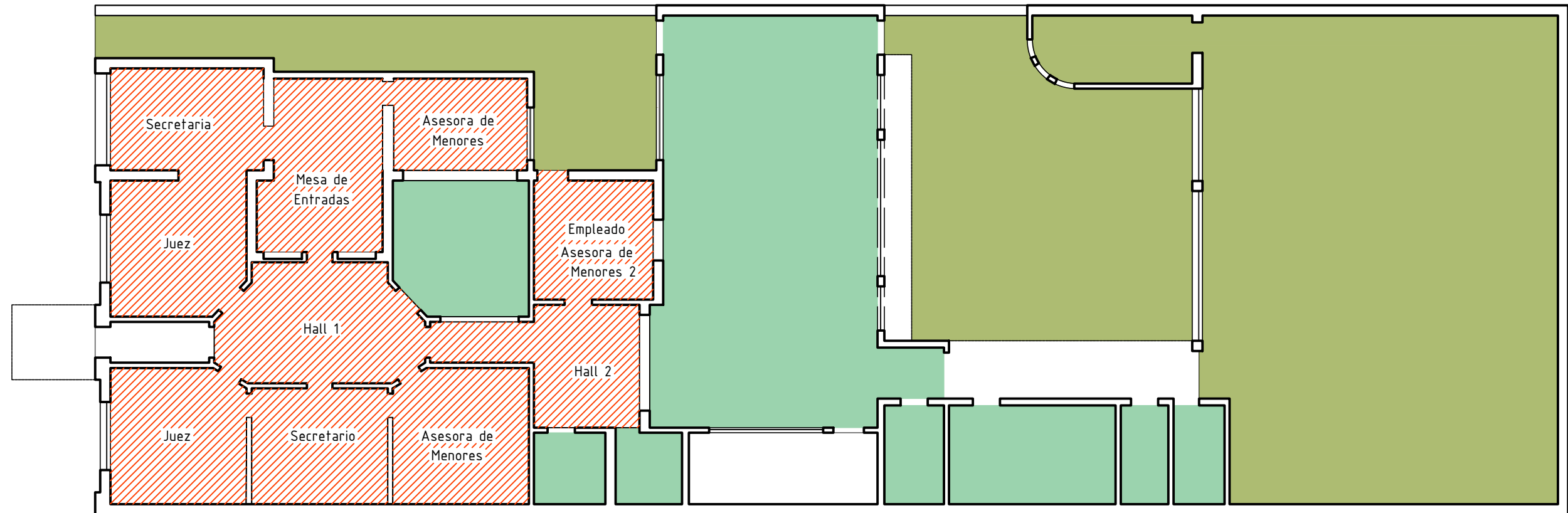
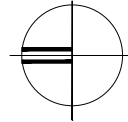


Planta General - PISOS

-  Cemento Alisado
-  Ceramico
-  Alfombra sector a intervenir



PLANO DE: SOLADO

ESCALA: S/E

PODER JUDICIAL DE LA PROVINCIA DE SANTA FE

A-02 Oficina de Arquitectura del Poder Judicial / Santa Fe

OBRA: INTERVENCIÓN SOLADO JUZGADO DE MENORES RAFAELA